



## **Boxgrove C of E Primary School**

Prospectus 2019-2020

“Parents and carers too are overwhelmingly positive about the school because pupils are happy, well taught and cared for well.” Ofsted February 2018

Thank you for requesting further information about Boxgrove Church of England Primary School.

I hope that this prospectus will provide you with useful and positive information about the school. When you are ready to discover more, please make an appointment to visit and see our work in action.

At our school, we provide a stimulating learning environment for all children within a caring, Christian ethos. We aim to give all children a wide range of learning opportunities to help them to grow into independent, well-behaved and responsible young people who achieve the highest standards possible across the whole curriculum. At Boxgrove School our aims are clear – to provide the best learning opportunities and the best learning outcomes for each child. We set high standards in all areas and are proud of the results we achieve.

We believe that we can only achieve the best for your child through close co-operation between home and school.

We encourage all parents to share in their child's education and we are always pleased to talk with you about any aspects of your child's development. We hope that you will want to share with us in making this a very happy and successful period in your child's life.



The information in this prospectus is up to date at the time of publication, but it can only ever give you a snapshot picture. Please come in, spend some time with us and see for yourself. We are extremely proud of our school, of our good OfSTED Inspection Report February 2018, of our good Church School Inspection Report November 2014 and, of course, of our wonderful children.

# Boxgrove C of E Primary School

Our Mission Statement: Working Together for our Children's Future

## Our Aims:

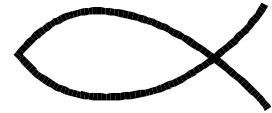
- To foster a Christian ethos within a happy and caring school environment
- To develop an enthusiasm for learning and a willingness to accept challenges, to take risks in order for all to achieve their individual potential
- To develop a broad, balanced skills-based learning environment that excites, stimulates and promotes the intellectual, creative, physical, social, emotional and spiritual development of every child to enable them to be successful citizens in the 21<sup>st</sup> century.
- To nurture self discipline, encouraging children to take responsibility for their own actions.
- To develop their understanding of their social and cultural traditions and an appreciation of the diversity and richness of other cultures in order to become active and caring people in our multicultural and ever changing society and to be a helpful citizen of the world.
- To encourage positive partnerships with parents, the church and the wider community



## School Organisation

Boxgrove Church of England Primary School is a co-educational primary school catering for children from 4 – 11 years old.

The school is situated within the South Downs and east of the City of Chichester. It is a Church of England Controlled School which works closely with the Local Authority, the Parish, the Diocese and community organisations.



There has been a school in the village since 1751.

The current accommodation comprises three classrooms and a community room.

The school enjoys extensive grounds. There is a hard surfaced play area as well as a large field. The school has environmental areas with an orchard and a large selection of bulbs, shrubs and trees which provide study material for a number of curriculum topics and fosters a love of nature in the children. There is also a reflective quiet garden for the children and staff to use also.

The school is very much a focal point of the village and the wider community.



## Internal Organisation

At present there are three classes. Classes vary in size according to the number of children in each year group. Within the class children will be organised in a variety of ways depending upon the activity. We believe that it is important that children do not always work in the same group. They need to have experience of working alongside friends, children of similar/different abilities, ages and in groups of different sizes. The children in each class are under the care and supervision of a class teacher.

The classes are arranged as follows:

Squirrel Class	Years R, 1 and 2
Fox Class	Years 3 and 4
Owl Class	Years 5 and 6

The Headteacher and Assistant Headteacher make the school management team. They have overall responsibility for the work that goes on in the school. Regular meetings and planning sessions ensure smooth progress for the children from one class to the next.

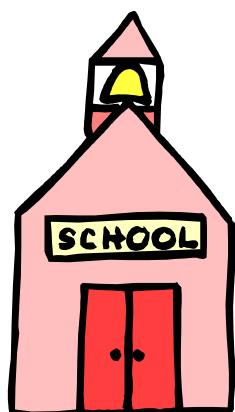
The children are also based in House Teams:

Blue

Red

Yellow

Children belonging to the same family are placed in the same house team in order to encourage mutual support. A variety of events are planned throughout the year based on house groups. Through the school, particular children are given areas of responsibility to help with the smooth running of the school. We aim to give all children a “feel” of responsibility during their school career. The “pupil voice” is met primarily through the weekly house team meetings.



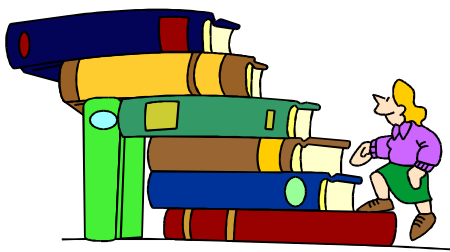
Long, medium and short-term planning provides a range of well-resourced differentiated activities for the children. The curriculum is broad and balanced following the National Curriculum Programmes of Study. It builds upon previous work and reflects all recent major initiatives. Each teacher is responsible for a class, but teaching staff are also encouraged to utilise their abilities through specialist teaching opportunities. In addition to the curriculum we also operate an extensive range of extra-curricular activities.

We have a comprehensive system of rewards and sanctions that are based upon our school code of conduct. Regular communication with parents is the basis of a strong partnership that is a vital element in our provision of a quality education. Visitors to the school are most welcome and all members of the school community are encouraged to take equal responsibility for making the school a happy, secure and exciting place to learn.

## Curriculum

### Curriculum Organisation

Our Curriculum is varied and stimulating. We ensure that as the children move through the school they make progress and build upon previous experiences. The topics studied are balanced across the Key Stage ensuring that all the children have the correct access to all curriculum areas. We use the Cornerstones creative curriculum materials to support the children's learning and their progression in skills.



Topics run half termly. The first week is called "Engage." The teachers organise a "wow" start and find out what the children already know about the topic. They then plan the learning to enable all the children to develop their skills and understanding in the "Develop" weeks that follow. Week 5 is "Innovate Week" where the children have the opportunity to independently apply their learnt skills and knowledge in real life contexts. "Express" is the last week which

encourages reflection and to further embed ideas taught

### The National Curriculum

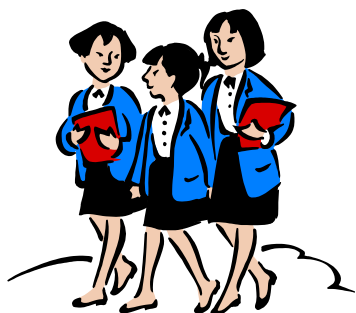
The National Curriculum Areas of Learning are:

- English
- Science
- Computing
- History
- Art and Design
- Music
- Personal, Social, Health, Economic and Citizenship Education (PSHCE Ed.)
- Mathematics
- Religious Education (RE)
- Geography
- Physical Education (PE)
- Design and Technology (DT)
- Modern Languages (MFL)

Teachers provide a range of classroom activities for the children so that the more able can be challenged, have an opportunity to deepen their learning and children experiencing difficulties are set appropriate tasks. This means that children will be working on similar areas but on skills/concepts to match their needs.

### Assessment

Assessment procedures are used for a variety of purposes. They help us to provide continuity and progression in learning to match the children's abilities and aptitudes. We use the feedback to help children understand what they know, can do and what they need to improve. We believe that constructive assessment can raise standards of education.



Children gain confidence and motivation from knowing what they are doing and when they have achieved it.

Parents are informed throughout the year and at the end of Year R about the progress their child has made with the Early Years Foundation Stage.

Towards the end of Year 1 the children are assessed in their phonic understanding.

At the end of Key Stage 1 (Year 2) the children are assessed in the areas of maths, English and science.

At the end of Year 4 children take the times tables check

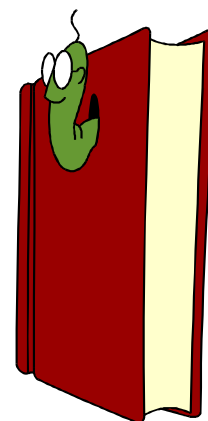
Children completing Key Stage 2 (Year 6) currently undertake National Curriculum Tests in reading, grammar and punctuation and maths, but other assessments take place continually for all children.

### English

As well as being a core subject of the National Curriculum, English is at the heart of our whole curriculum. Children's abilities are developed within an integrated programme of speaking and listening, reading and writing, handwriting and spelling in order to make them skilled communicators, fluent readers and expressive writers.

Children do regular reading, handwriting, phonic, spelling and grammar practice at school. We use a range of fiction and non-fiction books to help children develop their reading skills. Children are encouraged to develop a love of reading and become enthusiastic, independent and reflective readers. The children learn to express themselves confidently and clearly in a range of situations. We consider it essential that they are taught to listen carefully to others and to evaluate what they hear.

All children are expected to write in a variety of ways for different purposes and audiences – stories, poems, dialogues, scripts, reports and diaries are just a few of these ways. Creative, empathic, cross-curricular writing is actively encouraged.



### Mathematics

We aim to encourage children to achieve their best by making Maths an enjoyable and creative subject in which the child develops a positive interest. The foundation for this will be built upon good mental skills which include a thorough knowledge of number bonds and tables.

A lot of the work is of a practical nature involving the handling and investigation of shapes and other mathematical equipment.

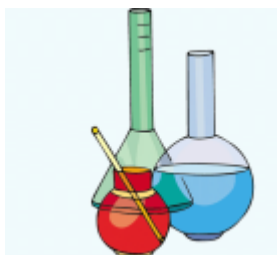
The main areas covered are:

- Number
- Measurement
- Geometry
- Statistics



Children are encouraged in Key Stage 2 to learn their tables and to bring them home to practice. An equally important part of the children's developing skills will be to use the Maths they have learned in a creative and investigational way. This is done by providing a series of mathematical problems which are designed to widen the children's mathematical thinking. This kind of learning also develops their ability to concentrate on aspects of Maths when a solution seems difficult to find!

### Science

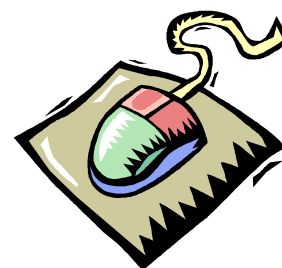


Science forms a major part of the curriculum for every child. We build on children's knowledge through practical activities. The content of the work being covered forms the basis of a broad and balanced scientific experience. Children are encouraged at all times to ask questions, plan, predict, test and evaluate, relating science to their everyday lives.

The scientific process involves children planning experimental work, obtaining evidence and then making sense of it all. Essential skills such as observing, predicting, measuring, presenting results and drawing conclusions all have their parts to play.

### Computing

Computing has been given an increasingly high profile in school. Every classroom has an interactive white board and computers for children's use. The children are taught specific computing skills and learn how to be e-safe.

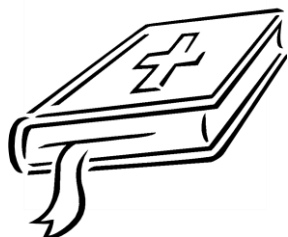


Each class has its own digital camera which is used to great effect in their activities. We are linked up to the internet and there is e-mail access in each classroom. The access is restricted to a filtered list of web sites controlled by West Sussex County Council on broadband. We do ask parents to give permission for use of the internet when children join the school.

### Religious Education



Being a Church of England Controlled School, the core of our religious teaching is Christianity. However, in keeping with the aims of the school to prepare children as citizens of the wider world and to appreciate the lives and attitudes of others, we also learn about other religions and traditions.



We follow the Diocesan Guidelines alongside the West Sussex RE Syllabus. An act of Collective Worship occurs daily in school reflecting the broad tradition of Christian belief, having regard to family background, ages and aptitudes of the children. (Should parents wish to withdraw their children from all or any part of Collective Worship or Religious Education, their request will be complied with and alternative provision can be made for them.) Father Ian, the priest- in -charge at Boxgrove Priory, leads our morning worship every Friday. Visitors from other local churches are also invited to lead Collective Worship through the year.

### History

Studying History brings about an understanding of how present lifestyle has evolved. The way we live today has been directly shaped by the way people lived in the past. Work in this subject draws initially from first-hand experience and the immediate locality and is designed to stimulate the children's interest. A major emphasis is placed on the use and interpretation of evidence through primary sources, such as letters, census data and other resources.



History also contributes to children's knowledge and understanding of countries and cultures in the wider world. It enriches other areas of the curriculum and will introduce children to the distinctive methods that historians use.

### Geography

Children today are more aware of the world and events than ever before. Geography in school is a study of places, the people who live in them and the human and physical processes that shape their development.



At our school it is a subject that enables children to understand their immediate area and the places they have travelled to. Map work is basic to any geographical study and the children look to refine their map reading as they move through the school. We are an eco-friendly school and we teach the children to look after the planet and recycle wherever possible.

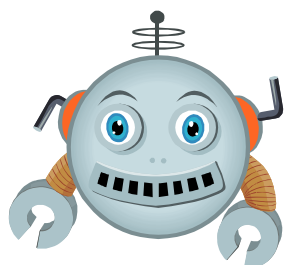
### Music

Emphasis is put on making and enjoying music by using rhythm and tuned percussion instruments, songs, tunes and accompaniment. Children listen to a range of music and learn a series of songs, including traditional and modern arrangements.



In addition to classroom music a team of peripatetic teachers provide specialist tuition e.g. guitar for which a charge is made. Parents should contact the school office if they would like their child to participate in extra music lessons.

### Design and Technology



Children learn a great range of skills, researching the project they are studying, planning what they are going to make, manufacturing their item and evaluating their work. Along the way they will learn to measure, use a range of tools safely, cut and join, make mock-ups and use a variety of materials such as card, paper, clay, wood, fabric and paints.

### Art and Design

Art and Design at Boxgrove CEP School is an enjoyable and enriching experience. Children are given many opportunities to observe, record and extend their knowledge through a variety of art activities. Children have experience of a range of materials. They learn about famous artists, their styles and their work by looking at examples of art from other cultures and eras. In doing this, children learn about the ways of life that produced the art and place it in the context of the culture that produced it.



Displays and presentation of children's work have an important place in the philosophy of the school. Art is just one part of the Creative Arts, for which the school has been awarded the Artsmark Award – July 2014.

### Physical Education

In Physical Education the children develop their skills across a variety of sporting activities and are offered a wide range of challenging activities. Where possible we use the expertise of outside coaches and specialists to support our teaching. The children in Years 3 to 6 have weekly swimming lessons at the Westgate Centre in the Spring Term.

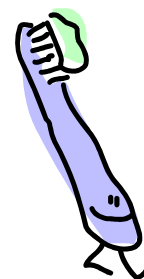


We hold an annual sports day which reflects the skills developed throughout the year as well as providing an opportunity for children to compete in athletics events.

During the school year a variety of opportunities arise (festivals, tournaments and competitions) for the children to attend, both within the family group of schools and our locality.

## Health and Sex Education

Sex education within school forms an integral part of the health education programme throughout the school. Children are encouraged to develop moral attitudes and to value family life. We understand our role is complimentary to and supportive of the role of parents. At all times staff aim to promote tolerance of social, moral and religious backgrounds, promoting self respect, self esteem and co-operation with others.



We always notify parents prior to the commencement of the course of study related to sex education (Years 5 and 6). Parents have the opportunity to discuss the content prior to this. Parents have the right to withdraw their children from any part of our sex programme. It is hoped that any concerns will initially be discussed with the Headteacher.

## Personal, Social, Health, Emotional and Citizenship Education

The Personal, Social, Health, Emotional and Citizenship educational development of all children within the school has a very high profile. We aim to establish positive attitudes of mind, good relationships between children and adults and high standards of behaviour. Our detailed behaviour policy reinforces our emphasis on the partnership between home and school. We value pupil voice and have an active House Team system. Children undertake a range of responsibilities such as the children in Owl Class being Playground Activity Leaders.



### Learning Support

Our Special Needs Policy states that “all children are entitled to a broad, balanced and differentiated curriculum”. We are committed to providing access to this curriculum for all pupils, whatever their needs.

The Special Needs Co-ordinator works with the class teachers and teaching assistants to provide support programmes for individual children – recognising that quality first teaching is the initial key. By making effective use of this system we focus closely on each child with specific needs and gain the best possible provision for such needs. We operate within the SEND Code of Practice.

## Homework

Every child is encouraged to read and talk about their learning at home. The children are encouraged to undertake activities related to their class topic each half term. Children are asked to learn weekly spellings, talk about the “word of the week”, and participate in different maths activities.



The homework policy has been written in full consultation with parents, children, staff and governors – we believe that it should help children to make more sense of their learning through making links with home and given them opportunities to share their learning with others.

## School Organisation

### School Hours

School begins	8.50 a.m.
Morning break	10.30 a.m. – 10.45 a.m.
Lunch break	12.10 p.m. – 1.00 p.m.
School finishes	3.15 p.m.

Our School Office is open from 7.45 a.m. until 5.00 p.m.

The hours spent teaching during a normal school week, including RE but excluding the Act of Worship, lunch and break are:

Key Stage 1	24 hours 10 minutes
Key Stage 2	25 hours 25 minutes



We like the children to arrive after 8.35 a.m. when supervision begins. Please ensure your child arrives punctually. If, however, your child is late for any reason they must report to the office on arrival in order to be marked present.

At break time the children are allowed a piece of fruit or vegetable to eat. They play outside on the playground supervised by a teacher and teaching assistants who are on duty. At lunchtime the children eat in classrooms or in the Community Room whether they are receiving a hot school dinner or eating a packed lunch. Water is available for the children. If a drink is brought in for the children to have with their lunch please ensure it is a still drink in a named plastic bottle or carton (no fizzy drinks, please).

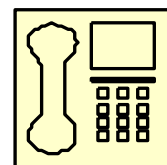
We do encourage all children to walk to ease the traffic congestion around the school. Parents, if driving, can park at the village hall in the car park and walk to school (a few minutes' walk away).

If you are unable to collect your child from school and they are expecting you, please arrange for somebody else to meet your child, but please let the school know so that we are sure they are leaving with the correct adult.

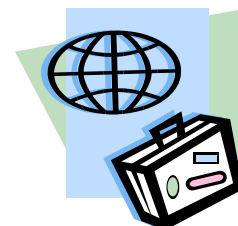
## Routine arrangements

### Absence

If your child is absent for any reason, please notify the school office immediately, by telephone on 01243 773309 or via a note with another child or sibling. By doing this, if any child is absent from school without a letter or telephone call, we can follow it up immediately. We are required to report any unauthorised absence. If your child is absent we need to record the reason for absence.



We ask that you do not to take term time holiday. No term time holiday is authorised. (If for any reason you wish to withdraw your child for a length of time, then permission must be gained from the Area Education Office in Worthing.)



Any holidays taken during the school term could mean your child missing elements of the National Curriculum that may not be repeated.

It is always better if medical appointments can be arranged out of school hours. If, for any reason, your child needs to keep an appointment during school hours, a letter or phone call should be made to the school in advance and your child collected from

the front entrance. Children will not be allowed to leave school unless accompanied.



### Rates of Authorised and Unauthorised Absences

These figures relate to the absence rate of pupils of compulsory school age in the immediately preceding school year (2016/2017).

Number of pupils on roll	75
School attendance	97.04%

(National expectation is 95%)

### Collective Worship



We have a daily act of Collective Worship when the whole school comes together as a community. Our daily worship is Christian, but respect is given to other faiths in keeping with our policy to prepare children for life and work in a multi-cultural society.

On Fridays Father Ian leads morning worship.

## Medical Arrangements

### School Nurse

The school nurse is able to carry out some health checks on the children concerning vision, hearing and weight.

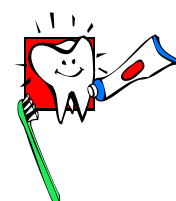
All children in YR have a health check e.g vision, hearing, the term they are 5.

All children in Y6 participate (unless you request otherwise) in the National height and weight screening audit.

The facility for checking children's heads for head lice no longer exists. Please check your own child's hair regularly and inform the school of any head lice. Regular combing with a special comb does help to keep head lice at bay. We can give you guidelines to help you with this matter.

### School Dentist

There is no school dentist who visits the children to inspect their teeth



### Administration of Medicines

With parental consent we can administer emergency Calpol

(paracetamol) and Piriton (anti-histamine) Where a child needs to complete a course of antibiotics, please arrange with your doctor dosages that do not require administration in school. If your child is a special case that falls outside these guidelines (e.g in need of hayfever antihistamine medicine, then please contact the Headteacher – there is a system in place to give medicated relief as needed in consultation with the school nurse) In cases of Asthma, we ask that your child brings two inhalers that are clearly named. One is kept in the classroom, the other in the school office as “back up”.



## Your Child's Health and Well Being

If, for any reason, your child is taken ill or is injured in school they will be cared for by one of our qualified first aiders in the school office area. If we are concerned in any way we will contact you immediately. It is therefore vital that we have your emergency contact details in school. You will be provided with a contact form.



Below is a list of the usual childhood illnesses and advice on the time your child will need to be absent from school:

Shingles	Keep off school only if rash is weeping and cannot be covered
Chickenpox	Keep off school for 5 days from the onset of the rash
German Measles	Infectious 1 week before, to about 4 days after the onset of rash Keep off school for 5 days from the onset of the rash
Measles	Keep off school for 5 days from the onset of the rash
Mumps	Keep off school for 5 days from the onset of the symptoms
Headlice	Treatment only if headlice seen Regular detection (combing) should be carried out by parents
Verrucae	Normal activities should continue It is advisable to cover warts with an appropriate dressing or footwear
Diarrhoea & Vomiting	Keep off school for 48 hours from last episode of diarrhoea and vomiting

### Personal Accident

You are recommended to check with your own personal/house insurance policy that your child is covered for personal accident as he/she is not covered by the County Council policy in school. Should you wish to insure your child we will be glad to provide details of a suitable policy.

### PTFA

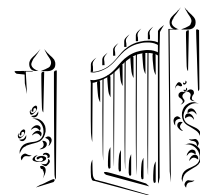
We have an active and lively PTFA which you are very welcome to join. They run a variety of events throughout the year giving parents and friends opportunities to meet, have fun and raise money which is then spent on equipment and additional extras for the children.

### Newsletters

Every Friday the weekly "blue letter" is sent home (it is also uploaded on the school website) to keep everyone informed about new initiatives, news and to celebrate various happenings in school! At the beginning of each topic teachers send home an outline of the learning to be covered in order for parents to be able to support their children's learning with visiting the library or when selecting weekend activities.

### School Security

The main school gates are locked at 8.50 a.m. and are re-opened a few minutes before the end of the school day; entry to the school during the day is only by way of the main entrance.



### Child Protection



Under the Education Act 2002 (section 175), schools must make arrangements to safeguard and promote the welfare of children. Parents/carers should be aware that the law (Children Act 1989) requires all school staff to:

- Support the children's development in ways that will foster security, confidence and independence
- Provide an environment in which children and young people feel safe, secure, valued and respected, and feel confident, and know how to approach adults if they are in difficulties, believing they will be effectively listened to
- Raise the awareness of all teaching and non-teaching staff of the need to safeguard children and of their responsibilities in identifying and reporting possible cases of abuse.

Training is provided for all staff. The school has designated members of staff for Child Protection as follows:

Jacqui Dommett	Headteacher
Theresa Smyth	Assistant Headteacher

The school has a comprehensive Child Protection Policy, details of which are available on the school website.

### Contact Forms

In an emergency it is vital that we are able to contact a child's parent or guardian as soon as possible. We ask you to complete a new contact form at the beginning of each school year to enable us to keep the information up to date. If, for any reason, your contact details alter during the year, please let us know as soon as possible and we will amend them accordingly.



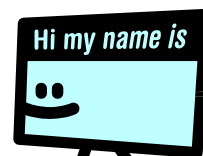
### Educational Visits

We believe that children's learning can be greatly enhanced by off-site visits. Teachers plan their project work and the visit as part of this work. You will be informed in writing about the details prior to the visit and asked to give your permission and to make a contribution towards the cost of the visit.



### Lost Property

This is managed by the office and is cleared termly. Please ensure all articles are clearly labelled and encourage your child to ask to check for any lost items.



### Equal Opportunities

We are opposed to all forms of racist, sexist and other behaviour that constitutes a breach of the right of equal opportunity.

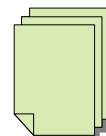
### Complaints Procedure



It is hoped that any complaints that parents may have can be discussed informally with the Headteacher initially. Should this prove unsatisfactory, a formal system for complaints, drawn up by the Local Authority in accordance with the Secretary of State, is available at the school on request.

### School Documents

Under Section 23 of the Education Reform Act, a variety of documents are available for the public to view on request. These include:



- The Local Education Curriculum Policy (Section 17(1) of Education (No 2) Act 1986)
- Statutory Instruments (including statutory orders for National Curriculum subjects)
- Circulars and administrative memoranda relating to powers and duties under Chapter 1 of the ERA
- Any published OFSTED reports that refer to the school
- Any current schemes of work used by staff
- A copy of the arrangements for the consideration of complaints
- The Local Authority's agreed syllabus for RE
- The School Prospectus

Should you wish to see any of the above documents please contact the Headteacher on the understanding that the documents will take time to be prepared and copied for you.

### Policies

There is a very large and comprehensive range of policy documents in school which you are very welcome to peruse at your leisure. If there is a policy which you would like to read in detail please do ask at the office and for a small fee we will arrange to provide you with a copy. Some policies can be found on our school website.



## Uniform

The children always look very smart in their school uniform and it helps to give us a sense of unity. We do appreciate your co-operation with this.

### Children may wear:

Grey pinafore dress/skirt  
Long or short grey trousers (not tracksuit bottoms please)  
White polo shirt  
School sweatshirt, cardigan or fleece top  
Grey, black or white socks  
Grey or black tights  
Black flat shoes (not trainers)  
Blue check dresses in summer

### PE Kit

Royal blue PE shorts  
Yellow "T" shirt with school logo  
Plimsolls/trainers  
Grey tracksuit

### Swimming

One-piece swimming costume  
Towel



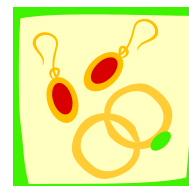
The PE kit ("T" shirts and shorts) and PE bags, and school sweatshirts, cardigans and fleeces, can be purchased at the school office. All other items are available at a variety of sources including major chain stores.

It is advisable to provide an old shirt to use as an overall for children to wear for practical work.

Please clearly label each item of clothing.

## Jewellery

With the exception of studs for pierced ears, it is safer that no jewellery is worn to school. It is advisable for children who do have pierced ears not to wear earrings on days when they do PE as they will have to remove them, or bring in tape which they can put over their studs themselves. We cannot be responsible for the loss. This is a West Sussex County Council regulation.



## Hair Ornaments



Please provide ribbons, hairbands or slides that conform to the colours of the school uniform, i.e. blue. Hair must be tied up for PE and swimming.

### *Admission policy*

The admission policy of this school is common to all county and controlled schools in West Sussex. The Policy is outlined in the booklet "Information to Parents" which is published by the Authority. If you have not received a copy of this publication you may obtain one by writing to the Area Education Officer at Centenary House, Durrington Lane, Worthing, BN13 2QB or by telephoning 01903 839141/839238 or email [admissions@westsussex.gov.uk](mailto:admissions@westsussex.gov.uk)

Boxgrove Church of England Primary School admits children from 4-11years.

### *Annual arrangements*

Following changes in the School Admissions Code parents now have the right to decide if their YR child will start school in September 2016 in a reception class on a full time or part time basis or defer entry. The decision no longer lies with the school. During the home visit (which is part of our induction programme) we will discuss the merits of all attendance possibilities.

## **Staff at Boxgrove CEP School**

Headteacher	Mrs Jacqui Dommett
Squirrel Class	Mrs Theresa Smyth (Assistant Headteacher) Mrs Halfacree (Tues-Fri part of the day also)
Fox Class	Mrs Katie Pendle (Monday to Wednesday) Mrs Claire Pearson (Thursday and Friday – Currently on Maternity Leave)
Owl Class	Mrs Nichola Martin
ICT Technician	Mr Gary Beeston from JSPC
Support Teachers	Mrs Sheri Halfacree
Teaching Assistants	Mrs Meg Brackley (Qualified first aider) Mrs Des Goodchild (Qualified first aider) Mrs Emily Squires (Qualified first aider) Mrs Niki Scott (Qualified first aider)
Bursar	Mrs Tracey Sheehan
Premises Manager	Mr Anthony Page
School Nurse	Mrs Kathy Dewar

## **The Governing Body**

### Governors and Responsibilities

Mrs L Clifford-Brown	Elected Parent Governor
Mrs Lucy Stent	Elected Parent Governor
Mr Della Hall	Elected Parent Governor
Mrs R Savage	Local Authority Governor
Revd Ian Forrester (Chairman)	Foundation Governor
Mrs Jan Agostine	Foundation Governor
Mrs Pauline O'Hare	Community Governor
Mrs Theresa Smyth	Elected Staff Governor
Mrs Jacqui Dommett	Headteacher Governor
Mrs Pasha Delahunty	Clerk to the Governing Body