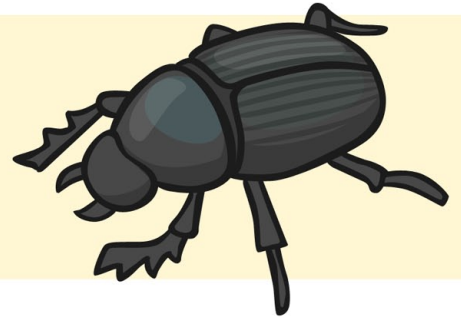


Beetles

There are lots of different species of beetle in the world. Beetles are found on land and in fresh water. Beetles have a hard outside shell which can open up to reveal two sets of wings.



All Shapes and Sizes

Some beetles are really big, and some are really tiny. The Titan beetle is one of the biggest and is over 20cm long - a little bit longer than a new pencil. Not all beetles are big though. The featherwing beetle is so small that it can only be seen under a microscope.

Mind-Blowing Beetle Fact

Beetles are one of the only species that live everywhere in the world. They make their homes in rainforests, deserts and even the snow and ice of Antarctica! They are able to change their bodies so that they can survive extreme heat or cold.

Don't Mess with the Beetles!

Because beetles are quite small and easy to find, they have to be able to defend themselves from other animals. They can do this in many different ways. Some beetles squirt poison or blood at animals who attack them. One kind of beetle is able to shoot burning hot liquid at anything that tries to harm it.

Did You Know?

- Beetles are one of the oldest animals in the world! They have been around for well over 250 million years.
- One out of every four animals on earth is a beetle.

Questions About Beetles

Answer the questions below in full sentences.

1. Where do beetles live?

2. Finish this sentence:

A beetle's shell is _____

hard

soft

3. How many sets of wings does a beetle have?

4. How does a beetle defend itself?

5. Finish this sentence:

Beetles are one of the _____ animals in the world.

youngest

oldest

6. Can you draw a picture of a beetle?



Questions About Beetles

Answers

1. Where do beetles live?

Beetles can live anywhere in the world. They make their homes in rainforests, deserts and even the snow and ice of Antarctica!

2. Finish this sentence:

A beetle's shell is hard.

3. How many sets of wings does a beetle have?

A beetle has two sets of wings.

4. How does a beetle defend itself?

Reference to one of the following:

- Beetles can squirt poison or blood at animals that attack them.
- One beetle can squirt hot liquid at anything that attacks it.

5. Finish this sentence:

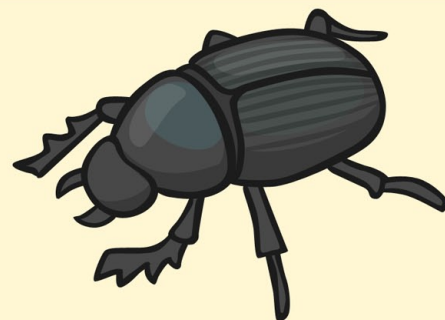
Beetles are one of the oldest animals in the world.

6. Can you draw a picture of a beetle?

Answers will vary.

Beetles

There are over 300,000 species of beetle in the world. Beetles are found on land and in fresh water and can get used to living in any environment. This means that they can adapt. Beetles have a hard outside shell which can open up to reveal two sets of wings.



All Shapes and Sizes

Some beetles are really big and some are really tiny. The Goliath beetle, found in the rainforests of Africa, can grow up to 13cm long. But these are small compared to the Titan beetle. These little monsters can grow to over 20 centimetres long - a little bit longer than a new pencil. Not all beetles are big though. The featherwing beetle is so small that it can only be seen under a microscope.

Mind-Blowing Beetle Fact

Beetles are one of the only species that live everywhere in the world. They make their homes in rainforests, deserts and even the snow and ice of Antarctica! They are able to change their bodies so that they can survive extreme heat or cold.

Don't Mess with the Beetles!

Because beetles are quite small and easy to find, they have to be able to defend themselves from predators. Predators are animals that eat other animals. Beetles protect themselves in many different ways. Some of them squirt poison or blood at animals who attack them. An African beetle, like the poison dart frogs in the Amazon rainforests, is used by hunters because it is very poisonous. One beetle is able to shoot burning hot liquid at anything that attacks it.

The best place and time to be a beetle was definitely in ancient Egypt. The scarab beetle was worshipped by the ancient Egyptians and was a popular design for good luck charms and for jewellery made from pottery or precious gems. They thought the scarab beetle was a sign of new life and new beginnings. They also believed that the huge scarab beetle was what made the sun move across the sky every day. The scarab beetle is now known by a different name: the dung beetle. It spends its days collecting big balls of poo and pushing them through the desert to eat later.

Did You Know?

- Beetles are one of the oldest animals in the world! They have been around over 250 million years.
- One out of every four animals on earth is a beetle.

Questions About Beetles

Answer the questions below in full sentences.

1. How many sets of wings does a beetle have?

2. Where can you find the Goliath beetle?

3. Is there anywhere in the world you won't find beetles?

4. What does predator mean?

5. When was the scarab beetle famous?

6. How long have beetles been around for?

7. How long are Titan beetles?

8. Name one way in which beetles can defend themselves.

Questions About Beetles

Answers

1. How many sets of wings does a beetle have?

Beetles have two sets of wings.

2. Where can you find the Goliath beetle?

Goliath beetles are found in the African rainforests.

3. Is there anywhere in the world you won't find beetles?

No. There are beetles everywhere on earth.

4. What does predator mean?

A predator is an animal who eats other animals.

5. When were scarab beetle famous?

Scarab beetles were famous in ancient Egypt.

6. How long have beetles been around for?

Beetles have been around for over 250 million years.

7. How long are Titan beetles?

Titan beetles can grow to over 20 centimetres long.

8. Name one way in which beetles can defend themselves.

Children can have a variety of answers. Squirting blood and poison, being poisonous or squirting burning liquid.

Beetles

There are a vast number of beetles in the world, with well over 300,000 unique species. Beetles are a very tough kind of insect as they are able to adapt to even the harshest environment. They can be found on land and in fresh water habitats. Beetles have what is known as an exoskeleton; this is a protective layer on the outside of their bodies rather than bones on the inside like a human has. This hard outside shell is able to separate to allow two sets of wings to be revealed. Not all beetles are capable of flying; some spend the majority of their lives underground.

All Shapes and Sizes

Some beetles are particularly large and bulky, whereas some can barely be seen. The Goliath beetle, found in the dense, moist rainforests of central Africa, in particular the Congo, can reach a length of up to 13cm long. Goliath beetles, however, look tiny in comparison to the incredible Titan beetle. These monsters grow to over 20cm long. Not all beetles are as large as the Titan beetle though. The featherwing beetle cannot be clearly seen by the naked eye. It is so small that it can only be seen in detail under a microscope.

Mind-Blowing Beetle Fact

Beetles have an impressive claim to fame. They are one of the only species in the world that live on every continent. They make their homes in the rainforests of Brazil, the deserts of Egypt and even in the snow and ice of Antarctica! They have the ability to alter their bodies so that they can survive extreme hot or cold, by generating heat or cooling quickly.

Don't Mess with the Beetles!

The majority of beetles are quite small and easy to find so they have developed the ability to defend themselves from predators. Beetles have a variety of techniques to protect themselves. Some of them are able to squirt jets of poison or blood at animals who might seek to harm them. Hunters apply poison to the tip of their arrows, by using an African beetle, like the poison dart frogs in the Amazon rainforests. This is so that they can shoot animals high in trees and the poison will kill them quickly. Amazingly, the bombardier beetle is able to shoot blistering hot, toxic liquid at anything that attacks it.

The best place and time to be a beetle was definitely in ancient Egypt. The scarab beetle was worshipped like a god by the ancient Egyptians and used as a central design for most pottery and jewellery. They gave the scarab beetle special significance, as they believed that it was a sign of new life and new beginnings. A popular myth was that the sun's path across the sky was due to it being pushed by a giant scarab beetle. The Egyptians often used animals to explain natural phenomena like storms and earthquakes. The scarab beetle is known by a different name in modern Egypt: the dung beetle. It spends its days collecting balls of poo, much bigger than itself, and rolling them through the desert to eat later.

Questions About Beetles

Answer the questions below in full sentences.

1. What is a beetle's exoskeleton?

2. In what country might you find the Goliath beetle?

3. What use are beetles to hunters?

4. What does the word unique mean?

5. Why was the scarab beetle important to the ancient Egyptians?

Give two reasons.

6. Name one way a beetle might defend itself.

7. What does it mean if something can't be seen by the naked eye?

8. What is the most impressive fact about beetles you found?

Questions About Beetles

Answers

1. What is a beetle's exoskeleton?

The exoskeleton is the beetle's hard outer shell.

2. In what country might you find the Goliath beetle?

You can find the Goliath beetle in the Congo, central Africa.

3. What use are beetles to hunters?

Hunters are able to use the poison from beetle to put on the tip of their arrows.

4. What does the word unique mean?

Unique means that they are different to others.

5. Why was the scarab beetle important to the ancient Egyptians? Give two reasons.

Ancient Egyptians believed that scarab beetles moved the sun and that they were a sign of new life.

6. Name one way a beetle might defend themselves.

Beetles might shoot poison, blood or hot, toxic liquid to defend themselves.

7. What does it mean if something can't be seen by the naked eye?

Not seen by the naked eye means that you have to use something like a microscope to see it.

8. What is the most impressive fact about beetles you found?

Children to select an appropriate fact from the text.